
SUPPORT GREYHOUND RACING
VOTE NO

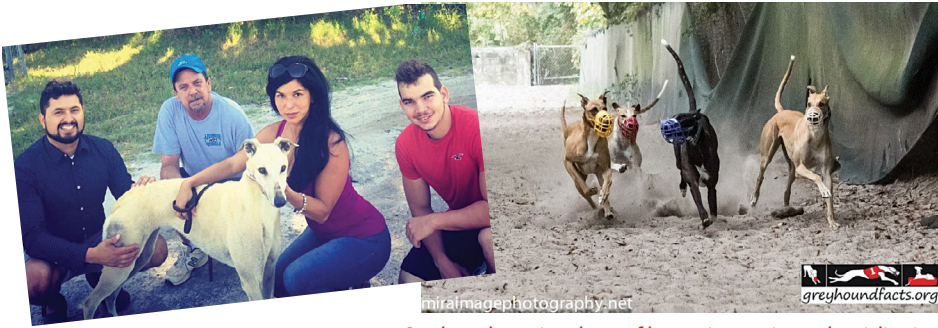
AMENDMENT 13

P A L M B E A C H K E N N E L C L U B

PALM BEACH KENNEL CLUB'S POSITIVE IMPACT:

- Support Greyhound Racing and Vote NO on Amendment 13 (proposing the banning of greyhound racing in Florida). Palm Beach Kennel Club is fully committed and supportive of the continuation of greyhound racing in Florida.
- The management at Palm Beach Kennel Club takes its responsibilities for greyhound welfare very seriously. Although PBKC does not own the greyhounds that run at our track, we have rules and contract provisions in place that require our kennel operators to follow proper procedures in caring for their greyhounds. The State of Florida and PBKC officials do routine inspections of the kennels and will follow up if there are any issues.
- Palm Beach Kennel Club's economic impact and community contributions (2017):
 - 539 employees with payroll of \$16.8 million
 - 12 kennels with 48 employees, earning \$4.2 million in purses.
 - \$4.8 million State of Florida & PB County taxes paid
 - \$10.4 million spent locally on goods and services
 - \$484,623 donated to local charity organizations
 - \$86,316 contributed to greyhound adoption programs
- Track veterinarian on hand for every race day closely monitoring the condition of all greyhounds, so that any illnesses or injuries are quickly detected and treated.
- State of the industry track safety procedures including improvements to the track surface, new safer lure technologies, safer fencing, widening of turns and other techniques.
- PBKC also takes pride in its active support of greyhound adoption with: Awesome Greyhound Adoption / Hounds & Heroes, Forever Greyhound Adoptions, Greyed A Greyhounds, Greyhound Pet Adoption and Greyhound Support Transport.
- Since 1932, Palm Beach Kennel Club has been one of Palm Beach County's most popular attractions providing fun and excitement to residents and visitors to the area.

Contact: Theresa Hume, thume@pbkennelclub.com 561-683-2222, ext. 120



Greyhounds receive plenty of human interaction and socialization at the track.

Most greyhounds race twice a week. On non-race days, they exercise with kennelmates in a sprint path. Some dogs also enjoy a soak in a whirlpool to ease tight or sore muscles, and others may swim at the beach.

Professional athletes, like greyhounds, are fed high quality food that meets their nutritional needs. The meals consist of raw meat that has been frozen, kibble, a carbohydrate such as rice or pasta, and/or fruits and vegetables. Each trainer has their own formula regarding vitamins and other supplements.

Crating is the safest way to comfortably house a large number of dogs. It also reduces the chances of fights by providing the dogs with a space of their own to eat, rest, and sleep. Greyhounds receive plenty of human interaction and socialization at the track.



FLORIDA GREYHOUND RACING

A first hand look at track life. It's more than just the races.

TRACK KENNELS:

Track kennels are kept clean, safe, and climate controlled to maintain a consistent temperature. Smoke alarms and carbon monoxide detectors are used in addition to a security system that monitors the kennels 24 hours a day. Any unusual fluctuation in temperature will set off an alarm that alerts the guard shack.



An Orange Park kennel in Jacksonville, FL



A Derby Lane kennel in St. Petersburg, FL

TRACK CRATES:

Track crates are large enough for the greyhounds to stand up, turn around, roach, and share with a friend.

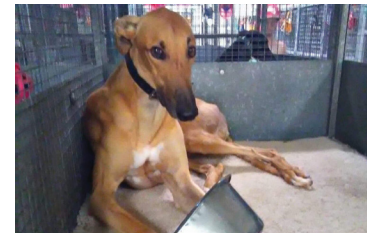
The minimum size of a track crate is:

42" x 34" x 32" = 26.4 ft³. Most track crates are larger.

A common pet crate size is: 42" x 28" x 30" = 20.4 ft³



Bebe shares her crate with Guddy



Justin appreciates being waited on every day

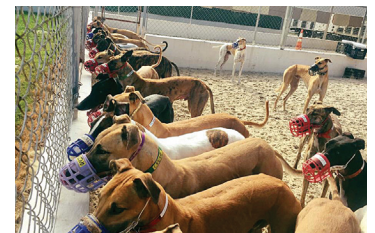
TRACK TURN OUTS:

The greyhounds are turned out an average of five times a day. Each turn out is typically 30 to 90 minutes and vary depending on the weather. The dogs are outside for a shorter period of time when it's too hot or raining, for example.

Muzzles are worn as a safety precaution. Greyhounds have notoriously thin skin.



Females relaxing in the sun during a turn out



Nothing goes unnoticed by the males

Often the general public doesn't have a true understanding of what the lives of racing greyhounds are like, and how their track experiences contribute to them becoming great pets. Internet searches will lead you to a great deal of information. Unfortunately, most of it is inaccurate and/or out dated. This honest information is sourced from those who truly care about the greyhounds and their well-being.

Visit ngagreyhounds.com, greyhoundchronicles.net and [Paint the Trail on Facebook](https://www.facebook.com/PainttheTrail) for more information.